



## Connecting Frequency Type-G Doggie Doorbells

The instructions provided here are for Pebble Smart Doggie Doorbells, frequency type G.

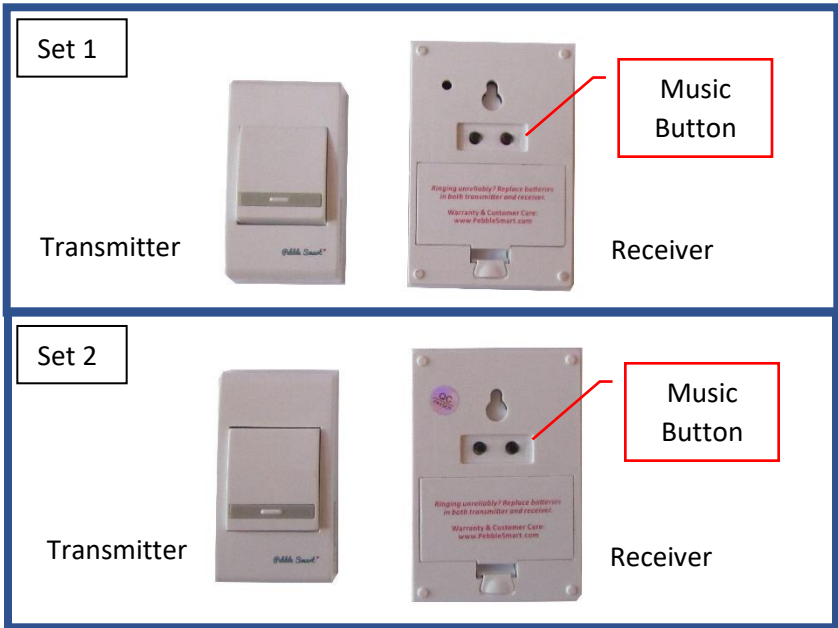
While only two doorbells are used in the illustration, the same process can be applied to any number of doorbells.

If you need to print this document, please choose “Booklet” in the print dialogue of PDF Reader.

## Connecting Frequency Type-G Doggie Doorbells

### Preparation

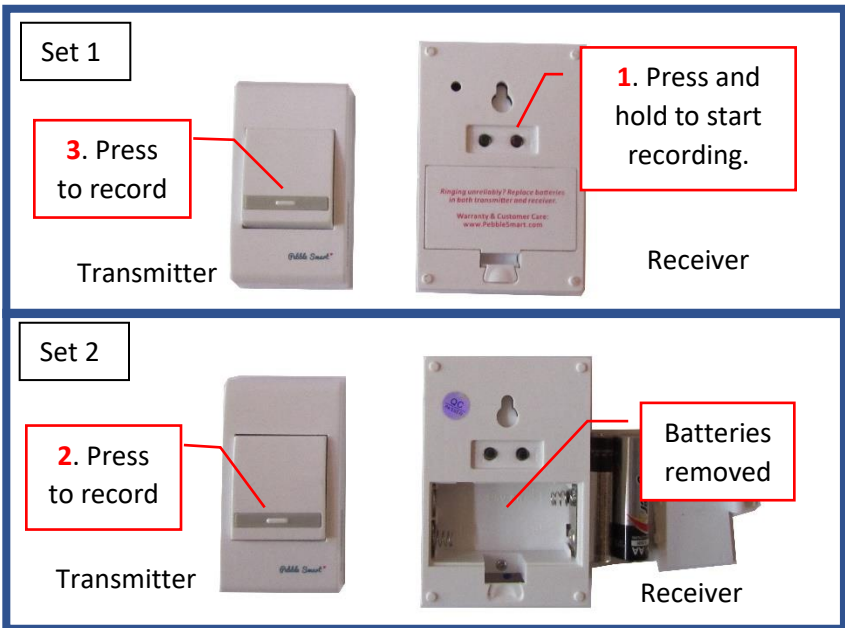
1. Remove the transmitters from the housing components.
2. Make sure each transmitter can trigger the receiver from the same set. If necessary, you can use the serial numbers on the stickers to match the transmitter and the receiver from the same set.
3. It is helpful to arrange the parts on a table as shown in the illustration below.
4. Locate the music button on the back of each receiver. Of the two round black buttons, it is the one on the right, with the music note symbol next to it.



## Recording Transmitters to Set 1 Receiver

First, remove the AA batteries from Set 2 Receiver. Now the steps, with illustration on next page.

1. On the receiver in Set 1, press and hold the music button. A tune will play. Do NOT release the button until after Step 3 below.
2. When the tune has stopped, fully press and then release the button on the transmitter in Set 2. The receiver should respond by playing the tune. If not, press the transmitter button again.
3. While continue to press and hold the music button on the receiver, fully press and release the button on the transmitter in Set 1.
4. Now you can release the music button on the receiver. Test each transmitter to make sure it is now paired with the receiver.



If not all transmitters are recorded, repeat the above steps. It is important to press and hold the music button on the receiver throughout the process.

### Record Transmitters to the Set 2 Receiver

The above process can now be repeated for the receiver in Set 2. Put the AA batteries back in the receiver in Set 2. Remove the batteries from the receiver in Set 1. With the music button pressed on the Set 2 receiver, after at least 5 seconds, fully press each transmitter in turn. The music response from the receiver is actually not essential. Hearing the tune helps confirm that the transmitters have been recorded.

### How Different Frequency Types Work

Previous models of the Doggie Doorbell featured the frequency types A and D, which are fixed and cannot be recorded. The instructions provided here do not apply to these models. Type G doorbells cannot be paired with Type A or D doorbells. Nor would Type G doorbells interfere with those earlier models.

Each transmitter of Type G doorbells comes with a unique digital code. Within a set, the transmitter's code was recorded to the receiver in the factory. The connecting process described above essentially erases previously recorded codes and replace them with the newly recorded transmitter codes. For this reason, each time when a new transmitter is to be added to a set, all of the transmitters need to be recorded in the same recording process.

If you have further questions, please visit our web page at [www.pebblesmart.com/multi-sets](http://www.pebblesmart.com/multi-sets).

Thank you for being our Doggie Doorbell customer.

The Pebble Smart Team.